

Figure 16.3
Japanese principal cities.

Figure 16.4
DID population densities in Japanese principal cities and Tokyo: 1960-2000.

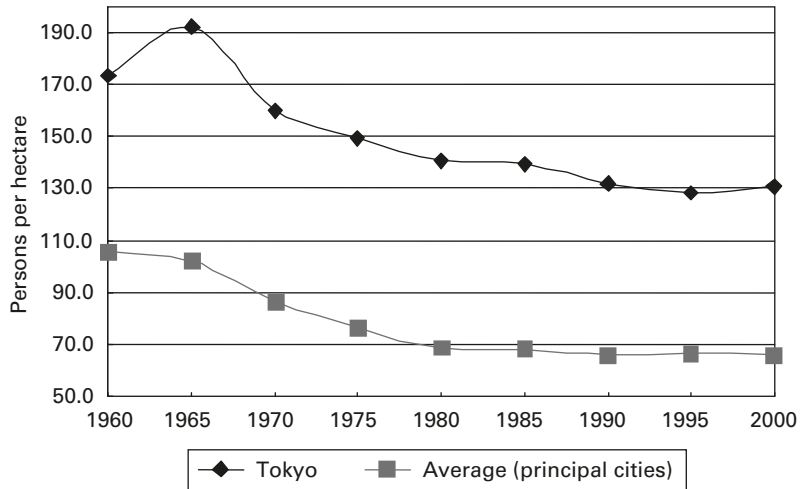


Figure 16.5
Changes in population, area and densities of DIDs.

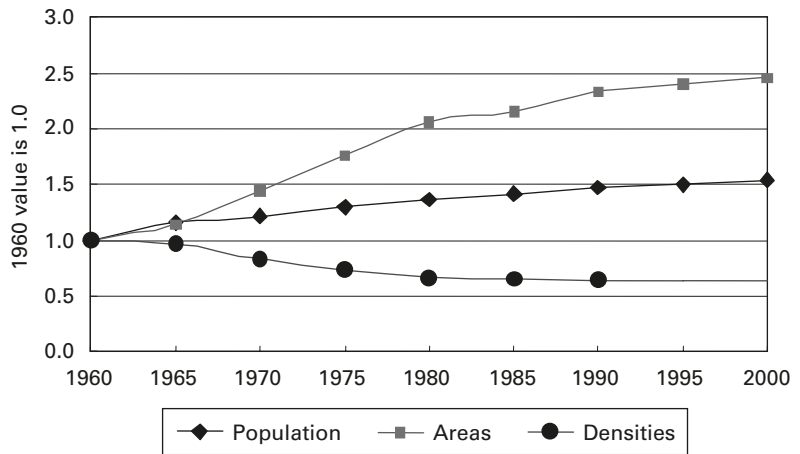


Figure 16.5 shows the changes in population, area and densities in the DIDs of the principal cities. After 1960, DID's areas in the sample cities had more than doubled, which is lower than the national figure for DIDs which had more than tripled. The population in DIDs increased by a factor of 0.64, which is also lower than the national average for DIDs population which was doubled since 1960. Population density in the principal cities was much the same as the national average.

Rapid urbanization: the case of Kanazawa city

Kanazawa is one of the cities under examination, and in 1960, had a population of about 225,000. Kanazawa was originally a